

Effect of Passive Turbulatorson Heat Transfer Enhancement Through a Tube

Research Article

Rajesh Gyaniram Brahmkar^{1*} and Yogesh Tembhurne²

1 M. Tech. Scholar, Mechanical Engineering Department, Bhabha Engineering and Research Institute, Bhopal, India.

2 Assistant Professor, Mechanical Engineering Department, Bhabha Engineering and Research Institute, Bhopal, India.

Abstract: Swirl flow devices cause swirl flow or secondary flow in the fluid. A variety of devices can be employed to cause this effect which includes tube inserts, altered tube flow arrangements, and duct geometry modifications. Dimples, ribs, helically twisted tubes are examples of duct geometry modifications. Tube inserts include twisted-tape inserts, helical strip or cored screwtype inserts and wire coils. Periodic tangential fluid injection is type of altered tube flow arrangement. Among the swirl flow devices, twisted- tape inserts had been very popular owing to their better thermal hydraulic performance in single phase, boiling and condensation forced convection, as well as design and application issues. Twisted Tape Twisted tape inserts increases the heat transfer coefficients with relatively small increase in the pressure drop. A CFD investigation on enhancement of turbulent flow heat transfer with twisted tape inserts in a horizontal tube under forced convection with air flowing inside is carried out using ANSYS FLUNT. The variations of heat transfer coefficients; Nusselt number in the horizontal tube fitted with twisted tape is studied. CFD solutions are obtained using commercial software ANSYS FLUENT v12.1. The working fluid in all cases is air.

Keywords: Heat transfer enhancement, pressure drop, turbulent flow, twisted tape.

© JS Publication.

1. Introduction

Nowadays, the high cost of energy and material has resulted in an increased effort aimed at producing efficient heat transfer equipment's. The heat transfer rate can be enhanced by introducing the disturbance in the fluid flow (making and breaking thermal boundary layers) but in process industries pumping power may increase significantly and ultimately the pumping cost becomes high. Heat transfer augmentation techniques refer to different methods used to increase the rate of heat transfer without affecting much the overall performance of the system. These techniques are used in heat exchangers. Some of the applications of heat exchangers are in process industries, thermal power plant, air conditioning equipment, refrigerators, radars for space vehicles, automobiles etc. In the past decade, several studies on the passive techniques of heat transfer augmentation have reported. The present paper reviews mainly focus on the twisted tape heat transfer enhancement and its design modification towards the enhancement of heat transfer and saving pumping power.

A decrease in heat transfer surface area, size, and hence weight of heat exchanger for a given heat duty and pressure drop.

The heat transfer can be increased by the following different augmentation techniques. They are classified as

(i) Passive Techniques (ii) Active Techniques (iii) Compound Techniques.

Guo et al. [1] studied the heat transfer and thermal performance factor in a tube with a center-cleared twisted tape. They found that the thermal performance of the tube with center-cleared twisted tape was enhanced up to 20% as compared

* E-mail: rajesh.brahmkar78@gmail.com

with that of tube with the typical twisted tape (TT). Wang et al. [2] conducted the computational fluid dynamics (CFD) modeling to predict the configuration optimization of regularly spaced short-length twisted tape in a round tube. It was observed that the tape with larger rotated angle yielded a higher heat transfer value and a greater flow resistance, whereas the one with smaller twist ratio resulted in better heat transfer performance. Cui et al. [3] carried out numerical simulation of the heat transfer characteristics and the pressure drop of air flow in a circular tube with an edge fold-twisted tape insert. It was reported that the Nusselt number and friction factor in the tube with edge fold-twisted tape were higher than those in the tube with TT up to 9.2 % and 74%, respectively. Eiamsa-ard et al. [4] numerically analyzed the swirling flow in the tube induced by loose-fit twisted tape insertion with different clearance ratios. The mean flow patterns in a tube with loose-fit twisted tapes in terms of contour plots of velocity, path line, pressure, temperature and turbulent kinetics energy were also described and compared with those in the tube fitted with tight-fit twisted tapes. Rahimi et al. [5] predicted the friction factor, Nusselt number and thermal-hydraulic performance of a tube equipped with the classic and three modified twisted tape inserts with CFD.

Among the tapes of interest, the jagged insert yielded the highest Nusselt number and thermal performance factor which were higher than those given TT by around 31% and 22%, respectively. Changhong Chen et al. [6] analyzed the computational fluid dynamics (CFD) modeling for the optimization of regularly spaced short-length TT in a circular tube. The configuration parameters are given by the 'S', 'y' and ' α '. The result is made such that the mean heat transfer and flow resistance increase with an increase in α . Yadav [7] experimentally investigated on the half length TT insertion on heat transfer & pressure drop characteristics in a U-bend double pipe heat exchanger. The experimental results revealed that the increase in heat transfer rate of the TT inserts is found to be strongly influenced by tape-induced swirl. Eiamsa-ard et al. [8] made a comparative investigation of enhanced heat transfer and pressure loss by insertion of single TT, full-length dual TT and regularly-spaced dual TT as swirl generators. The result shows that all dual TT with free spacing yield lower heat transfer enhancement in comparison with the full-length dual TT. Hata and Masuzaki [9] investigated the TT-induced swirl flow heat transfer due to exponentially increasing heat inputs with various exponential periods and the TT-induced pressure drop were systematically measured.

The influence of 'y' and 'Re' based on swirl velocity, 'Resw' on the TT-induced swirl flow heat transfer was investigated and predictable correlation was derived. Eiamsa-ard et al. [10] studied the influences of multiple twisted tape vortex generators (MT-VG) on the heat transfer and fluid friction characteristics in a rectangular channel. From the experiment it is revealed that, the channel with the 'y' and 'S' provides higher heat transfer rate and pressure loss than those with the larger 'y' and free-spacing ratio under similar operation condition. C.B. Sobhan et al. [11] experimentally investigated on a 1-2 shell and tube heat exchanger, to study the spiral turbulators on its performance. Date [12], Date and Saha [13] numerically predicted the friction and heat transfer characteristics for laminar flow in a circular tube fitted with regularly spaced twisted-tape elements that were connected by thin circular rods. Choudhari and Taji [14] have been studied the experimental investigation of the heat transfer and friction factor characteristics of a double pipe heat exchanger fitted with coil wire insert made up of three different material as copper, aluminum and stainless steel and different pitches for Reynolds number in range of 4000-13000. Ray and Date [15] investigated experimentally correlations of heat transfer and flow frictions in a square duct with twisted-tape insert.

Seemawute and Eiamsa-Ard [16] have been conducted the experiments for heat transfer in heat exchanger tubes by means of TRs compared to that of CRs at different width and pitch ratio has been investigated for Reynolds number between 6000 and 20,000. At the same width ratio ($W/D = 0.15$) and a given pitch ratio, only TRs with the smallest pitch ratio (p/D) of 1.0 give higher Nusselt numbers than the CRs by around 3 to 4%. Kumar and Prasad [17] reported the improved solar collectors of water heating types by means of twisted tapes inserted in the water flow tubes. Sukhatme et al. [18] studied

experimentally the effect of the twisted-tape insert on heat transfer rate and pressure drop in laminar flow under uniform heat flux. Salimpour and Yarmohammadi [19] have been conducted an experimental investigation to find the influence of twisted tape inserts on the pressure drop during forced convective condensation of R-404A vapor in a horizontal tube. The tube set 5 with twist ratio of 4 has the highest pressure drop.

Reduction in twist ratio induces higher turbulence intensity in liquid film and vapor core. Seemawute et al. [20] has been investigated comparatively visualization of flow characteristics induced by twisted tape consisting of alternate-axis (TA) to that induced by typical twisted tape (TT). The visualization was carried out via a dye injection technique. The TAs was made of aluminum strips (for heat transfer setup) and acrylic sheet (for visualization setup) with thickness of 1.0 mm (δ), width of 18 mm and length of 1000 mm. Enhanced tubes with different inserts are used extensively in the refrigeration, air-conditioning, and commercial heat pump industries as well as in the chemical, petroleum, and numerous other industries [21].

2. CFD Analysis

The heat exchanger with twisted tape inserts used in this study is shown in Fig. 1. The effects of five various-lengths of twisted tapes on Heat Transfer and Flow Friction Characteristics are studied. The solution domain is a circular tube with twisted tape inserts. After defining the computational domain, uniform and non-uniform mesh is generated. In creating this mesh, it is desirable to have more cells near the plate because we want to resolve the turbulent boundary layer, which is very thin compared to the height of the flow field. After generating mesh, boundary conditions have been specified. We will first specify the left face is the tube inlet and right face is the tube outlet. Meshing of the domain is done using ANSYS ICEM CFD V12.1 software.

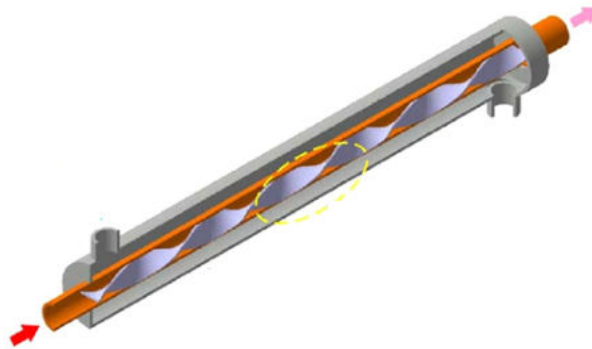


Figure 1. Heat exchanger with twisted tape inserts

Since low-Reynolds-number turbulence models are employed, the grids are generated so as to be very fine. To select the turbulence model, the previous experimental study is simulated using different low Reynolds number models such as Standard $k-\omega$ model, Renormalization-group $k-\varepsilon$ model, Realizable $k-\varepsilon$ model and Shear stress transport $k-\omega$ model. The results of different models are compared with experimental results. The RNG $k-\varepsilon$ model is selected on the basis of its closer results to the experimental results. The working fluid, air is assumed to be incompressible for the operating range of duct since variation is very less. The mean inlet velocity of the flow was calculated using Reynolds number. Velocity boundary condition has been considered as inlet boundary condition and outflow at outlet. Second order upwind and SIMPLE algorithm were used to discretize the governing equations. The FLUENT software solves the following mathematical equations which governs fluid flow, heat transfer and related phenomena for a given physical problem.

3. Results and Discussion

Fig. 2 shows the effect of Reynolds number on average Nusselt number for different lengths of twisted tape. The average Nusselt number is observed to increase with increase of Reynolds number due to the increase in turbulence intensity caused by increase in turbulence kinetic energy and turbulence dissipation rate.

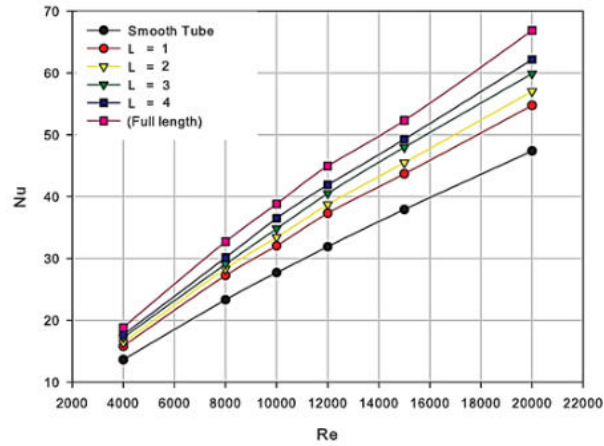


Figure 2. Nusselt number vs Reynolds number

It can be seen that the enhancement in heat transfer of the heat exchanger with twisted tape inserts with respect to the smooth heat exchanger also increases with an increase in Reynolds number. It can also be seen that Nusselt number values increases with the increase in length of twisted tape inserts. This is due to the fact that heat transfer coefficient is low at the leading edge of the twisted tape and high at the trailing edge. Higher value of length of twisted tape produced more reattachment of free shear layer which creates the strong secondary flow. The heat exchanger with full length twisted tape inserts provides the highest Nusselt number at a higher value of Reynolds number.

The heat transfer phenomenon can be observed and described by the Contour plot of Pressure for different lengths of twisted tape (Fig. 3).

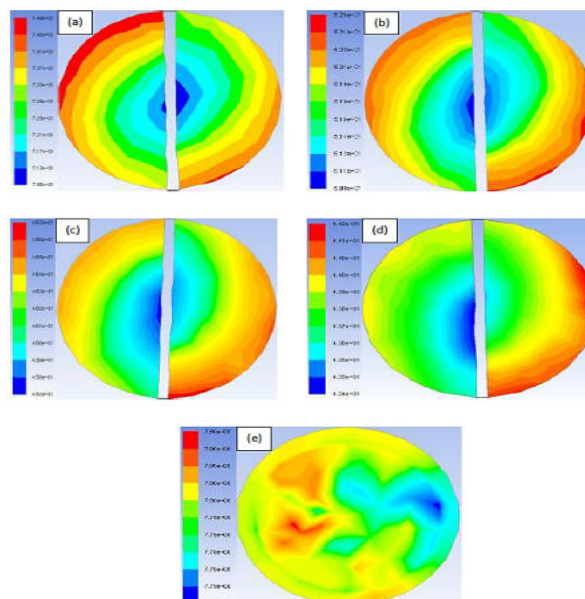


Figure 3. Contour plot of Pressure

4. Conclusion

A twisted tape insert mixes the bulk flow well and therefore performs better in laminar flow, because in laminar flow the thermal resistant is not limited to a thin region. The air flow through heat exchanger with twisted tape inserts is studied to examine the heat transfer characteristics as well as the friction characteristics. CFD analysis has been carried out to study heat transfer and fluid flow behavior in a heat exchanger with twisted tape inserts. The effect of Reynolds number and length of twisted tape on the heat transfer coefficient and friction factor have been studied. The following conclusions are drawn from present analysis:

1. Among the swirl flow devices, twisted- tape inserts had been very popular owing to their better thermal hydraulic performance in single phase, boiling and condensation forced convection, as well as design and application issues.
2. In case of twisted tape with modified geometry, more turbulence is created during the swirl of fluid and gives higher heat transfer rate compared to plain twisted tape and modified twisted tape.
3. Insertion of twisted tape in a tube provides a simple passive technique for enhancing the convective heat transfer by producing swirl into the bulk flow and by disrupting the boundary layer at the tube surface. However, the increase in friction is seemed to be the penalty of the technique.
4. There is a definite increase in heat transfer through heat exchanger with twisted tape inserts with increase in friction to the flow.
5. The short-length twisted tape insert still provides higher heat transfer rate (Nu) than the plain tube.
6. The heat exchanger with full length twisted tape inserts provides the highest Nusselt number at a higher value of Reynolds number.

References

- [1] J.Guo, A.Fan, X.Zhang and W.A.Liu, *Numerical Study on Heat Transfer and Friction Factor Characteristics of Laminar Flow in a Circular Tube Fitted with Center-Cleared twisted tape*, Int. J. Thermal Sciences, (2011), 1263-1270.
- [2] Y.Wang, M.Hou, X.Deng, L.Li, C.Huang, H.Huang and G.Zhang, C.H.Chen and W.Huang, *Configuration Optimization of Regularly Spaced Short-Length Twisted Tape in a Circular Tube to Enhance Turbulent Heat Transfer using CFD modeling*, App. Therm. Eng. (2011), 1141-1149.
- [3] Y.Z.Cui and M.C.Tian, *Three-Dimensional Numerical Simulation of Thermal-Hydraulic Performance of a Circular Tube with Edgefold-Twisted Tape Inserts*, J. Hydrodynamics, Ser. B(2010), 662-670.
- [4] S.Eiamsa-Ard, K.Wongcharee and S.Sripattanapipat, *3-D Numerical Simulation of Swirling Flow and Convective Heat Transfer in a Circular Tube Induced by Means of Loose-Fit Twisted Tape*, Int. Comm. Heat and Mass Transfer, (2009), 947-955.
- [5] M.Rahimi, S.R.Shabanian and A.A.Alsairafi, *Experimental and CFD Studies on Heat Transfer and Friction Factor Characteristics of a Tube Equipped with Modified Twisted Tape Inserts*, ChemEng and Proc: Proc Intensification, (2009), 762-770.
- [6] Yangjun Wang, MeilingHou, Xianhe Deng, Li Li, Cheng Huang, Haiying Huang, Gangfeng Zhang, Changhong Chen and Weijun Huang, *Configuration optimization of regularly spaced short-length twisted tape in a circular tube to enhance turbulent heat transfer using CFD modeling*, Applied Thermal Engineering, 31(2011), 1141-1149.

- [7] Anil Singh Yadav, *Effect of half-length twisted tape turbulator on heat transfer & pressure drop characteristics inside a double pipe U-bend heat exchanger*, Jordan journal of Mech. & Industrial Engg., 3(1)(2009), 17-22.
- [8] S.Eiamsa-ard, ChinarukThianpong, PetpicesEiamsa-ard and PongjetPromvonge, *Thermal characteristics in a heat exchanger tube fitted with dual twisted tape elements in tandem*, International Communications in Heat and Mass Transfer, 37(2010), 39-46.
- [9] K.Hataa and S.Masuzakib, *Twisted-tape-induced swirl flow heat transfer and pressure drop in a short circular tube under velocities controlled*, Nuclear Engineering and Design, xxx(2010), NED-5980.
- [10] S.Eiamsa-ard, *Study on thermal and fluid flow characteristics in turbulent channel flows with multiple twisted tape vortex generators*, International Communications in Heat and Mass Transfer, 31(2010), 644-651.
- [11] C.B.Sobhan, K.T.Mohammed kutty, M.Hannan and P.Krishtaiah, *Experimental investigations on a 1-2 heat exchanger with wire-wound tubes*, warme- und Stoffubertragung, 29(3)(1994), 211-217.
- [12] A.W.Date, *Prediction of fully developed flow in a tube containing a twisted tape*, International Journal Heat Mass Transfer, 17(1974), 845-859.
- [13] A.W.Date and S.K.Saha, *Numerical prediction of laminar flow and heat transfer in a tube fitted with regularly spaced twisted-tape elements*, International Journal Heat Fluid Flow, 11(1990), 346-354.
- [14] S.ChoudhariShashank and S.G.Taji, *Experimental Studies on Effect of Coil Wire Insert On Heat Transfer Enhancement and Friction Factor of Double Pipe Heat Exchanger*, International Journal of Computational Engineering Research, 3(5)(2013), 32-39.
- [15] S.Ray and A.W.Date, *Friction and Heat Transfer Characteristics of Flow through Square Duct with Twisted Tape Insert*, International Journal Heat and Mass Transfer, 46(2003), 889-902.
- [16] C.Thianpong, K.Yongsiri, K.Nanan and S.Eiamsa-ard, *Thermal performance evaluation of heat exchangers fitted with twisted-ring turbulators*, International Communications in Heat and Mass Transfer, 39(4)(2012), 861-868.
- [17] A.Kumar and B.N.Prasad, *Investigation of twisted tape inserted solar water heaters-heat transfer, friction factor and thermal performance results*, Renewable Energy Journal, 19(2000), 379-398.
- [18] S.P.Sukhatme, U.N.Gaitonde, C.S.Shidore and R.S.Kuncolienkar, *Forced convection heat transfer to visouliiquid in laminar flow in a tube with a twisted tape*, Proceeding Ninth Natl. Heat Mass Transfer Conference, (Paper no. HMT 7-87) Indian Institute of Science, Bangalore, India, Part B(1987), 1-7.
- [19] M.R.Salimpour and S.Myarmohammadi, *Effect of twisted tape inserts on pressure drop during R-404A condensation*, International Journal of Refrigeration, 35(11)(2012), 263-269.
- [20] P.Seemawute and S.Eiamsa-Ard, *Visualization of Flow and Heat Transfer in Tube with Twisted Tape Consisting of Alternate Axis*, 4th International Conference on Computer Modeling and Simulation, 22(2012), 36-40.
- [21] H.A.Mohammed, S.Tabatabaeikia and K.M.Munisamy, *Heat transfer enhancement using nano fluids in a circular tube fitted with inserts*, Journal of Computational and Theoretical Nano science, 11(3)(2014), 655-666.